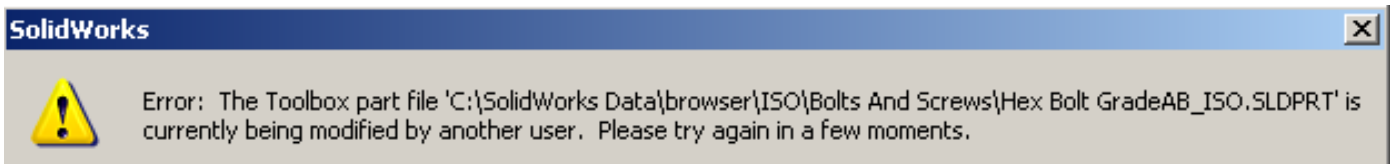
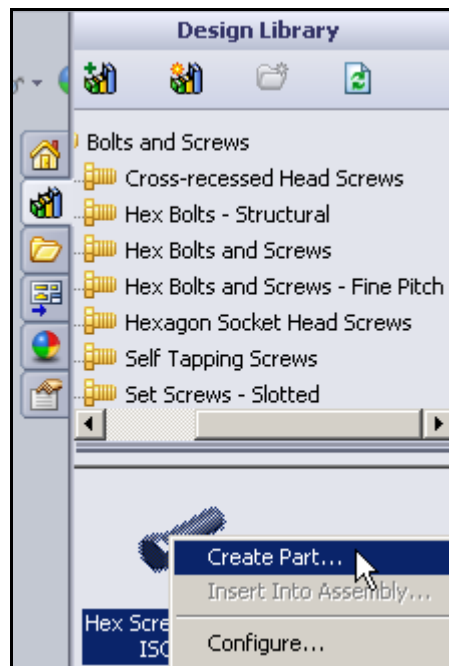


## SolidWorks 2009 Toolbox Error Work Around

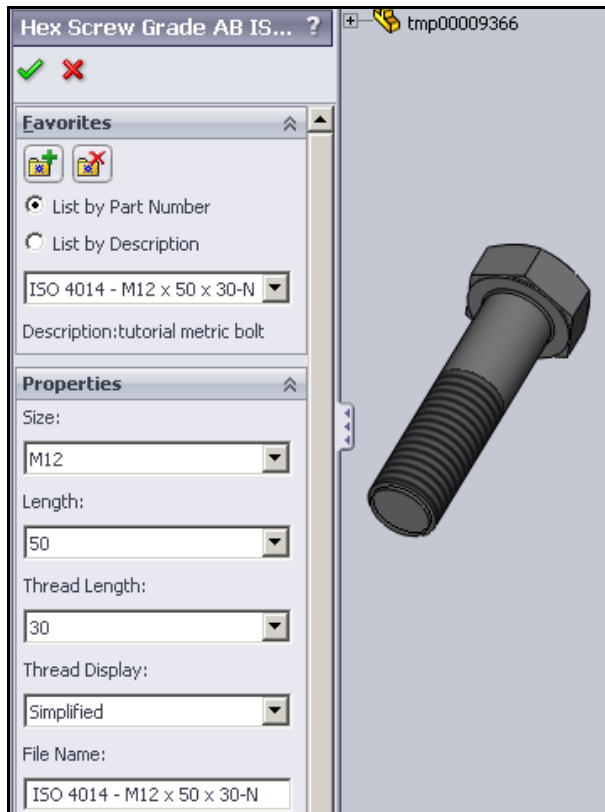
The SolidWorks 2009 modeling tutorial on the Toolbox resource stops with an error message:



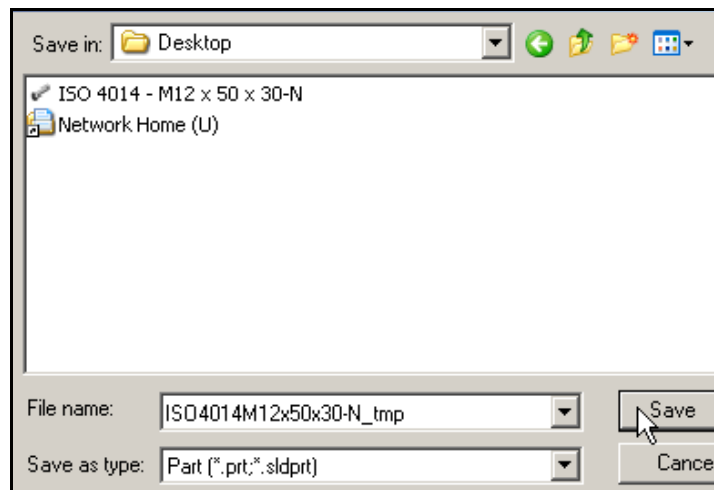
A similar message occurs in the assembly mates tutorial. This note outlines a work around of saving the bolts/screws and nuts as temporary parts to be brought into your model. The error occurs when you are at **Design Library**→ **Toolbox**→ **ISO**→ **Bolts and Screws**→ **Hex Bolts and Screws**→ **ISO 4014**. At that point you have a chance to save the read only part from the toolbox as a named part. Right click on the bolt/screw/nut name and select **Create Part**.



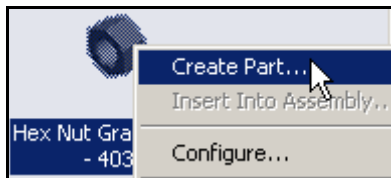
The **Hex Screw panel** will open so that you can set the specific component sizes. When done, pick **OK**.

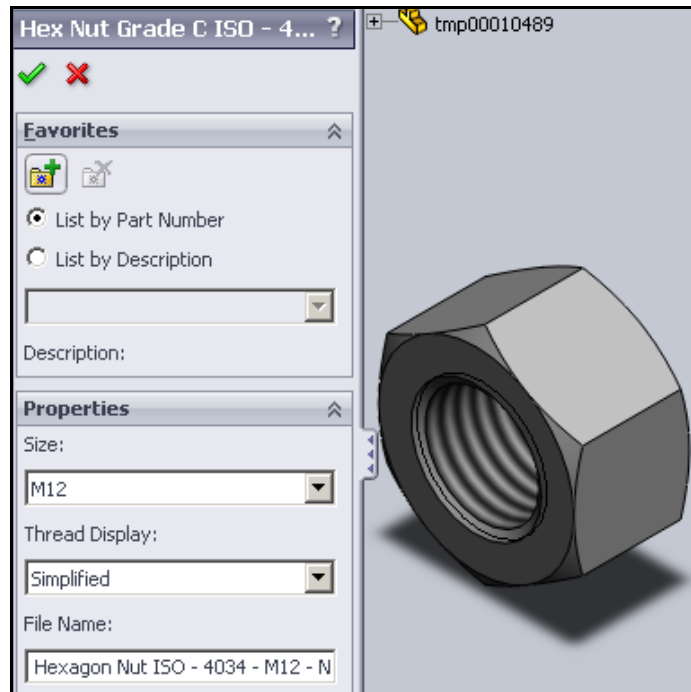


Specify the save directory and change the part name to denote it is temporary:

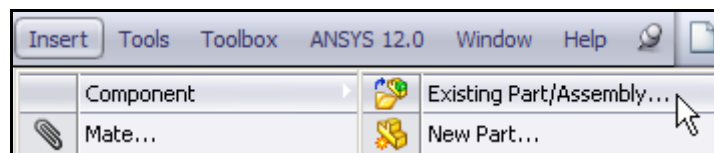


Carry out the same process for the other components you need, like the hex nut:





After saving all the components needed from the toolbox proceed building the assembly as you do with standard parts. Use **Insert**→**Component**→**Existing Part**→**Browse**.



When you drag in the toolbox components to the existing parts you built they will sometimes snap to the holes and automatically mate. If not you can use the standard assembly mate process to insert the bolts and nuts, etc. The result is shown below and leads you to the same result as the tutorial.

