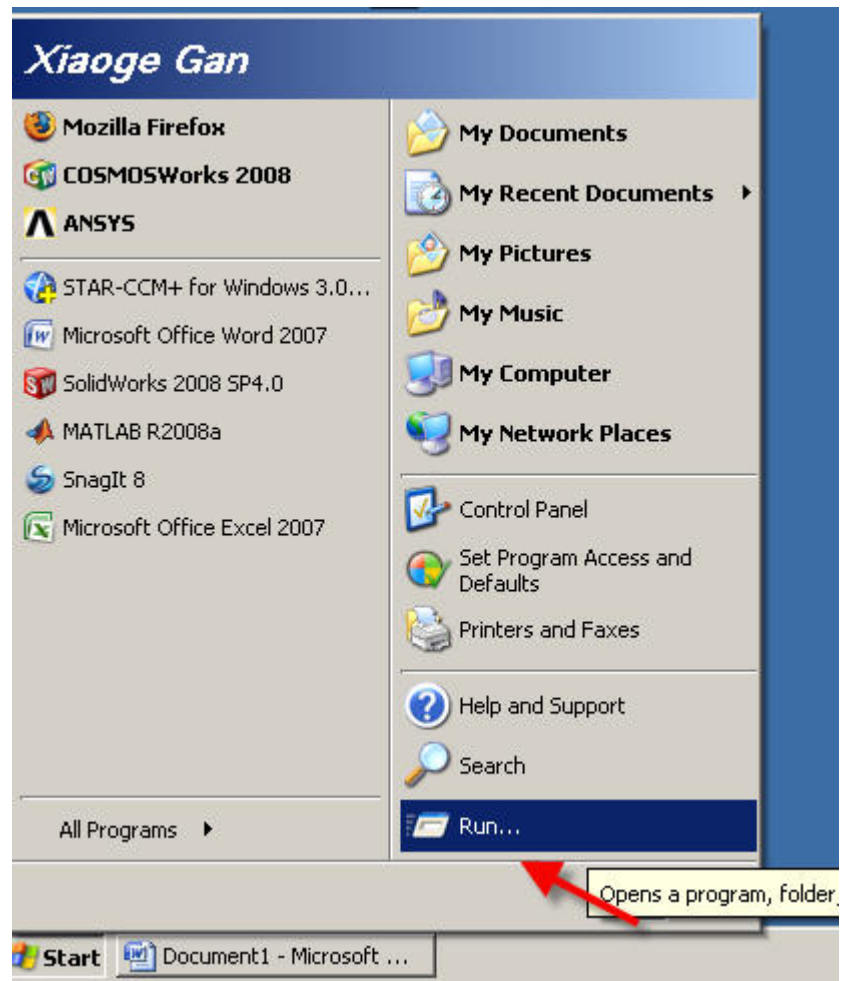
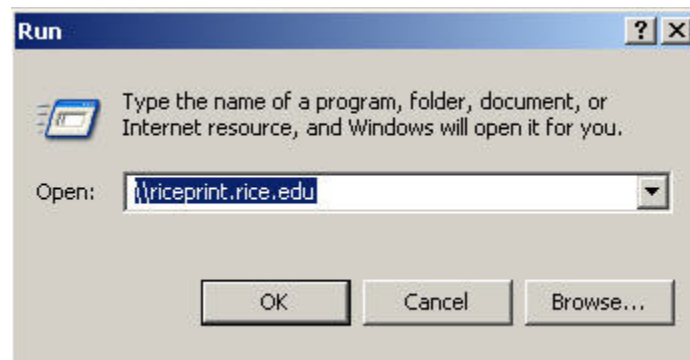


## Instructions for using the printer in COX-241 (For Windows users)

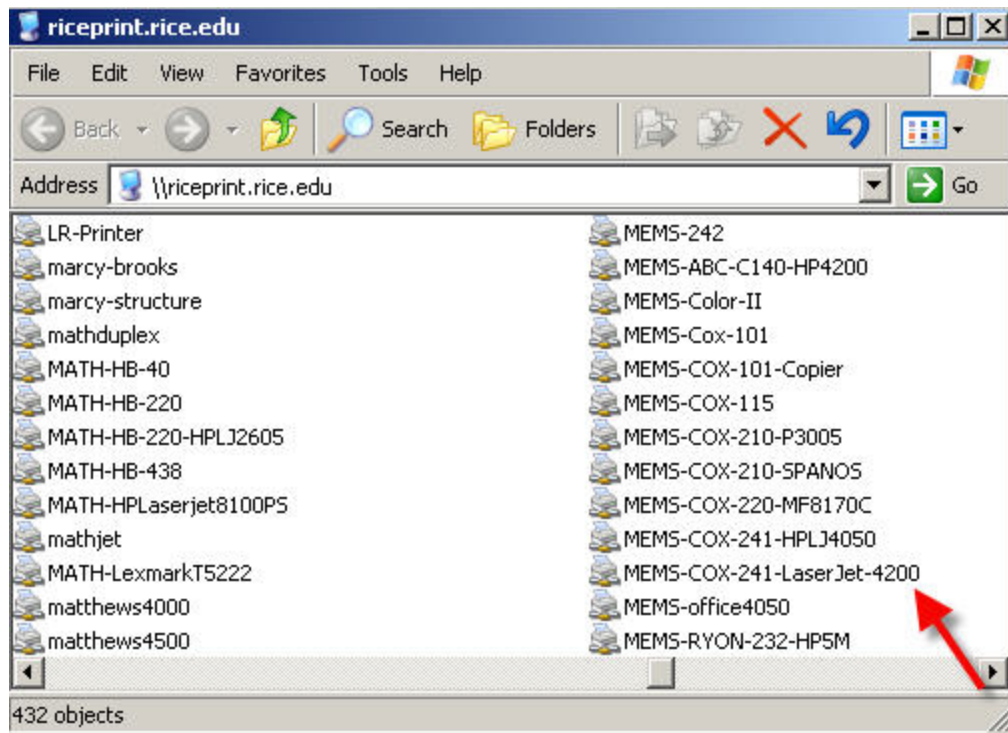
1. Go to "Start" -> "Run"



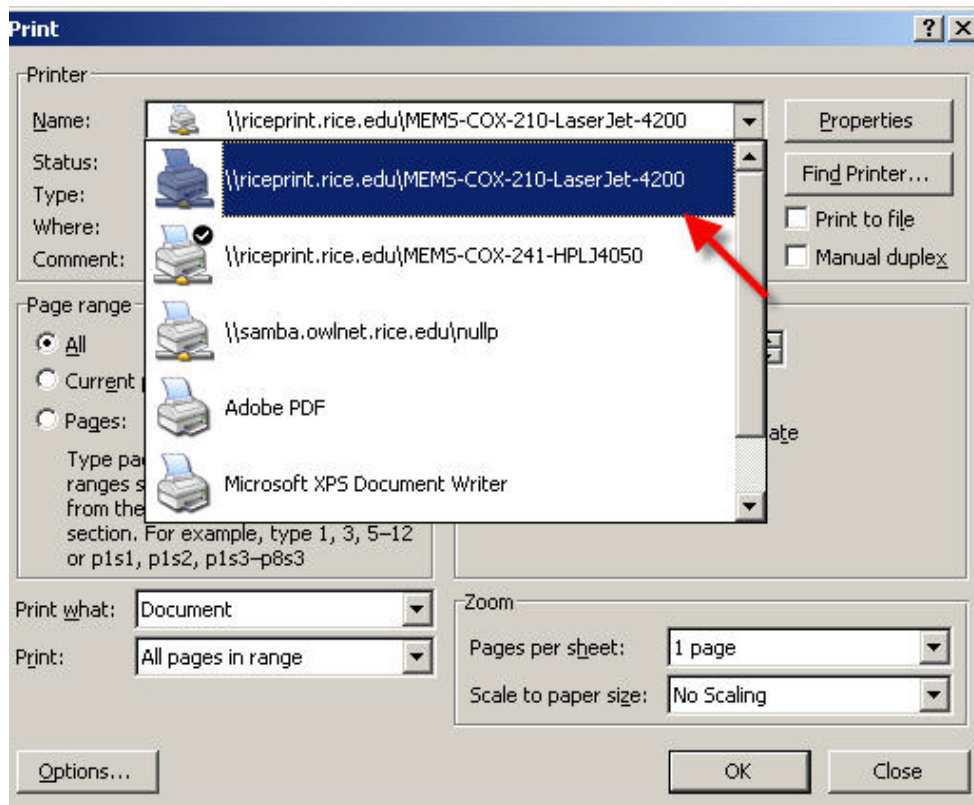
2. Type `\\riceprint.rice.edu` -> OK



3. Browse for **MEMS-COX-241-Laserjet-4200** -> Double Click on it and done!



4. Now you can print from the new added printer (**The room No. COX-210 is correct!**)



## **Problems that may occur to you:**

1. If your computer is not on **ADRICE**, it will ask for your credentials. It will be your RICE NetID and NetID passwords.

Username: ADRICE\<>NetID>

Password: <NetID Password>

Check "save password"

2. Make sure the flapper is open on the back of the printer to avoid **Paper Jam**.
3. Sometimes the **ATTENTION** light is on, which indicates the printer is trying to load paper from Tray 1. You will need to change it to Tray 2 to get your paper printed. To do this, just follow the instructions shown on the printer.